

ETAMINE  
PARIS

MAISON-JARDIN

  
CLICKBOOK

# Overview

FRENCH RIVIERA	04
JARDIN SECRET	05
AMBRE D'ÉTÉ	06
FLEUR D'ORANGER	07
ROSE DE MAI	08
JASMIN DE GRASSE	09
CHEMIN BLANC	10
LA COLLE NOIRE	11
LINA	13

ETAMINE  
PARIS



# Maison-Jardin

ETAMINE  
PARIS

"Each new creation is like a new spring, where the pieces of fabric are the new young shoots" - Christian Dior

At a time when we are aware of the benefits of nature and the importance of preserving it, this collection celebrates the garden as a feminine ode to the plant world; as a source of oxygen for our lives.

"House Garden" looks at the new world and pays tribute to the beauty of linen from our regions. A wind of freshness blows over its creations, designed with compassion.

In Provence, the scented summer amber flowerbeds of Château Dior inspire us. Its Colle Noire estate dominates the flowery countryside of the French Riviera. A lover of flowers, the couturier cultivated his passion surrounded by roses and white jasmine paths. Dior made Colle Noire the symbol of a simple and convivial French art of living, inspired by the happiness evoked by the nature he found in his secret garden.

Our collection suggests lightness the imagination of vegetation and is presented in the manner of herbariums and pressed flowers. The prints and embroideries refer to varieties such as Provence rose, Grasse jasmine and orange blossom. Its botanical and floral motifs are the artistic interpretation of a floral art that is delicate, free and up-to-date. Its natural colours, mimosa yellow, mint green and fig pink, reflect our emotions and bring joy and comfort.

Composed of 9 natural fabrics, this collection is minimal and precise. Some fibers are washable, others are ecological and durable. Cotton and linen yarns are woven into single and double width fabrics, finished to be extremely soft and soothing to touch.

"House Garden" is far from the emblematic clichés of design, a relaxed atmosphere full of modernity: an expression of the Zeitgeist of the ETAMINE Paris.

A meeting place.



# French Riviera



19578-755



19578-884



19578-984

## OVERVIEW

## ETAMINE PARIS

NAME <b>French Riviera</b>
ARTICLE NUMBER <b>19578</b>
CATEGORY <b>Decoration</b>

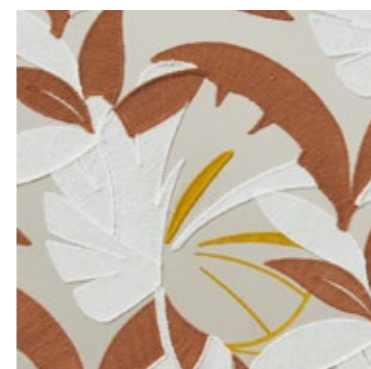
FABRIC WIDTH <b>300 cm</b> ↑↓
MATERIAL <b>60 % PES, 40 % LI</b>
MARTINDALE

PROPERTIES  
CARE INSTRUCTIONS     

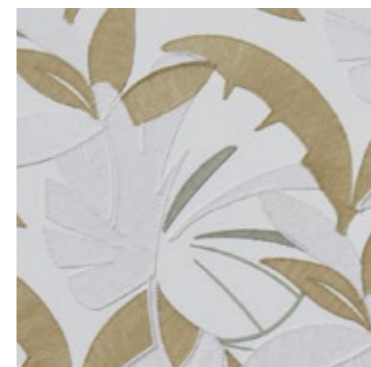
The FRENCH RIVIERA print is characterised by a panel pattern, now characteristic of the ETAMINE Paris collections. In the "toile de Jouy" spirit, a Mediterranean garden scene depicts phoenix palms and cloudy olive trees. Printed on a linen base, FRENCH RIVIERA comes in natural tones, from sand neutrals to palm greens.



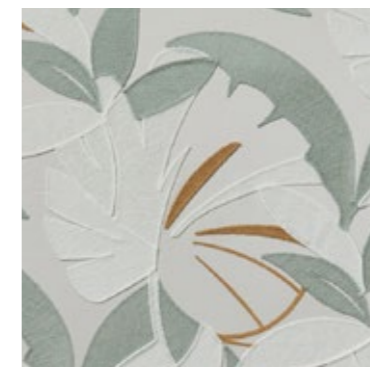
# Jardin Secret



19579-216



19579-664



19579-685

## OVERVIEW

## ETAMINE PARIS

NAME  
**Jardin Secret**

ARTICLE NUMBER  
**19579**

CATEGORY  
**Decoration**

FABRIC WIDTH  
**140 cm**

MATERIAL  
**Ground: 100 % CO  
Embroidery: 100 % PAN**

MARTINDALE

PROPERTIES

CARE INSTRUCTIONS

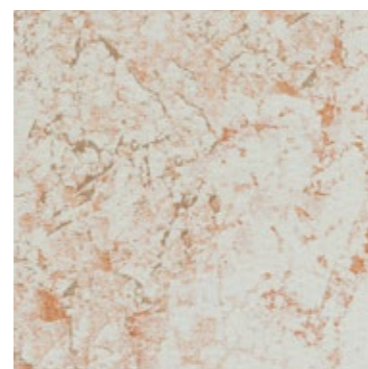


This fabric embroidered on cotton satin confirms ETAMINE Paris' attraction to botanical exuberance. Like in a secret garden, the leaves mix and mingle rhythmically to form one. The embroidery work here is extremely time-consuming. Each leaf is embroidered in chain stitch with a matte wool thread, the direction of the stitches delicately following the shapes.



# Ambre D'Été

**ETAMINE**  
PARIS



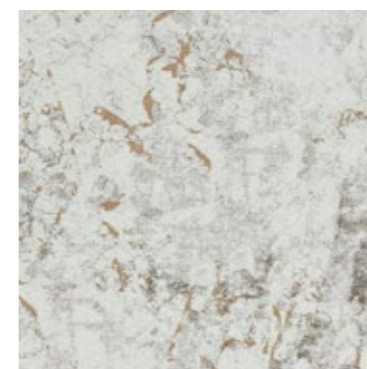
19580-385



19580-595



19580-883



19580-894

NAME <b>Ambre D'Été</b>
ARTICLE NUMBER <b>19580</b>
CATEGORY <b>Decoration</b>

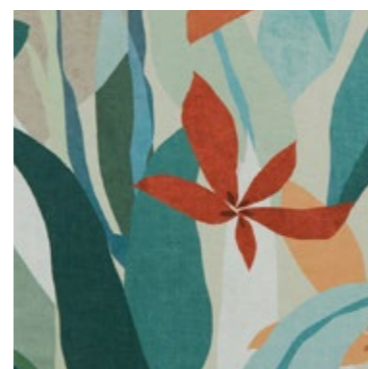
FABRIC WIDTH <b>300 cm</b>
MATERIAL <b>50 % PES, 28 % LI, 22 % CV</b>
MARTINDALE

PROPERTIES 
CARE INSTRUCTIONS 

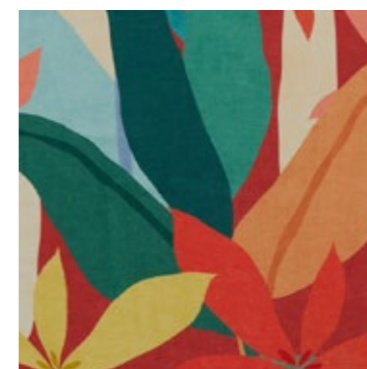
AMBRE D'ÉTÉ is rotary printed on a wide cloth. Three rotating frames follow one another on the fabric, delicately reproducing colourful amber prints marked by time. This traditional technique highlights the material and preserves the beauty of the inks used.



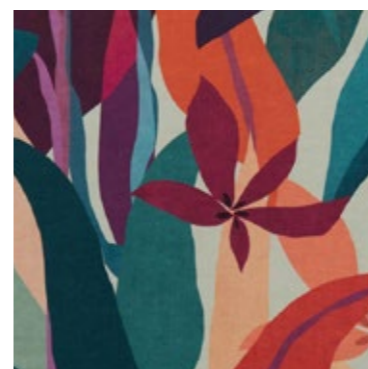
# Fleur d'Oranger



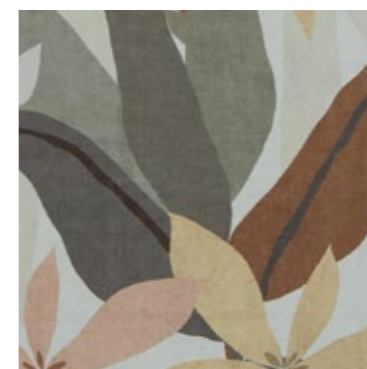
19581-265



19581-477



19581-648



19581-895

## ETAMINE

PARIS

NAME

**Fleur d'Oranger**

ARTICLE NUMBER

**19581**

CATEGORY

**Decoration**

FABRIC WIDTH

**134 cm**

MATERIAL

**100 % LI**

MARTINDALE

PROPERTIES



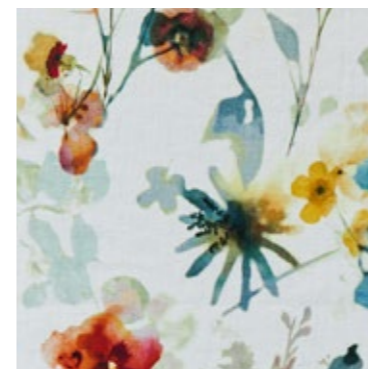
CARE INSTRUCTIONS



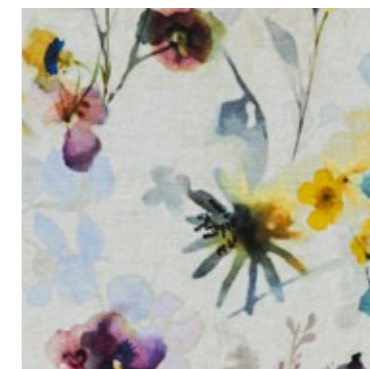
Made in Italy at a renowned printer, FLEUR D'ORANGER offers a colourful reinterpretation of ETAMINE Paris flowers. It presents the abstract interlacing of orange blossoms from Mediterranean gardens, printed digitally on the shores of Lake Como. Its remarkable character lies in the artistic colour separation of the design into 35 delicately chosen colours, printed on a linen cloth. Its "Energy" finish gives the linen an elegant look and a soft drape.



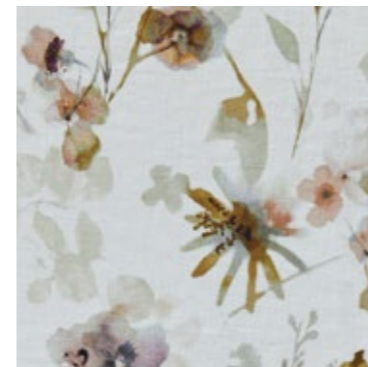
# Rose de Mai



19582-415



19582-455



19582-483



19582-525

## OVERVIEW

**ETAMINE**  
PARIS

NAME	<b>Rose de Mai</b>
ARTICLE NUMBER	<b>19582</b>
CATEGORY	<b>Decoration</b>

FABRIC WIDTH	<b>140 cm</b>
MATERIAL	<b>100 % LI</b>
MARTINDALE	

PROPERTIES	
CARE INSTRUCTIONS	

Made in Italy, the ROSE DE MAI print highlights ETAMINE Paris' attachment to flowers. Printed digitally on the shores of Lake Como, on a 100 % linen cloth, Provence Rose features floral patterns such as a herbarium where many varieties of flowers are intermingled. The flowers are drawn with extreme delicacy. An "Aero" finish gives the linen a refined look and an extremely soft touch.





# Jasmin de Grasse



19583-883



19583-884



19583-990

## OVERVIEW

## ETAMINE PARIS

NAME	<b>Jasmin de Grasse</b>
ARTICLE NUMBER	<b>19583</b>
CATEGORY	<b>Sheers</b>

FABRIC WIDTH	<b>300 cm</b>
MATERIAL	<b>78 % CO, 22 % LI</b>
MARTINDALE	

PROPERTIES	
CARE INSTRUCTIONS	

Made in Italy and woven in wide width, JASMIN DE GRASSE plays with transparencies. Woven with thrown and cut threads, its cotton petals draw like delicate lace on a linen base. The "Maltinto" artisanal dyeing gives each variation a subtle and natural change in colour and its "Aero" finish gives it added softness.

# Chemin Blanc

## ETAMINE

PARIS

NAME

**Chemin Blanc**

ARTICLE NUMBER

**19584**

CATEGORY

**Sheers**

FABRIC WIDTH

**300 cm** ↑↓

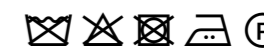
MATERIAL

**68 % LI, 23 % CO, 9 % PES**

MARTINDALE

PROPERTIES

CARE INSTRUCTIONS



19584-883



19584-886



19584-991

Light as air, CHEMIN BLANC is characterised by the transparency and emblematic look of ETAMINE Paris sheers. Woven in wide widths of linen and cotton, a thrown and cut yarn draws structured stripes giving this linen sheer a timeless elegance. An "Aero" finish brings softness and comfort.










# La Colle Noire

OVERVIEW

**ETAMINE**  
PARIS

NAME <b>La Colle Noire</b>
ARTICLE NUMBER <b>19585</b>
CATEGORY <b>Sheers</b>

FABRIC WIDTH <b>300 cm</b>
MATERIAL <b>67 % PES, 33 % CO</b>
MARTINDALE

PROPERTIES <b>Recommend puddle on the floor</b> 
CARE INSTRUCTIONS      



19585-115



19585-284



19585-335



19585-483

LA COLLE NOIRE is a double weave in a wide width. In the weft, a flamed-mixed cotton thread is double-dyed and draws subtle natural shades. An extremely "soft" finish softens the fibers for a fluid and airy drape.

OVERVIEW

# ETAMINE

PARIS



19585-555



19585-556



19585-666



19585-775



195854-883



19585-884



19585-990



19585-991





19585-992



19585-998

NAME <b>La Colle Noire</b>
ARTICLE NUMBER <b>19585</b>
CATEGORY <b>Sheers</b>

FABRIC WIDTH <b>300 cm</b>
MATERIAL <b>67 % PES, 33 % CO</b>
MARTINDALE

PROPERTIES <b>Recommend puddle on the floor</b> 
CARE INSTRUCTIONS 



# Lina

OVERVIEW

ETAMINE

PARIS

NAME

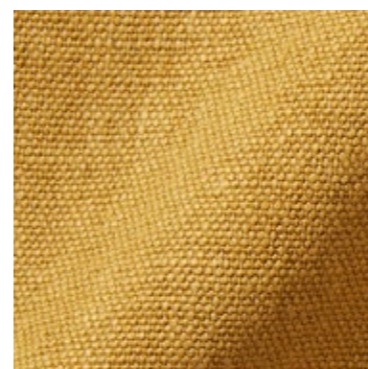
**Lina**

ARTICLE NUMBER

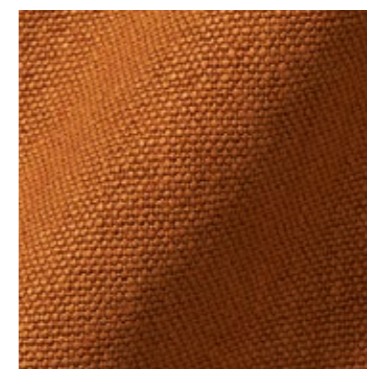
**19588**

CATEGORY

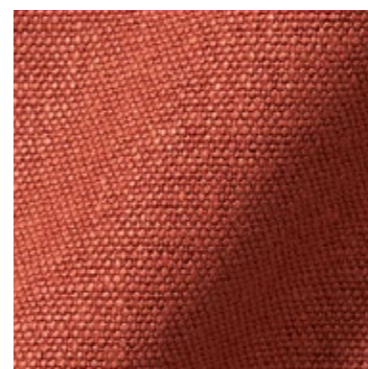
**Decoration / Upholstery**



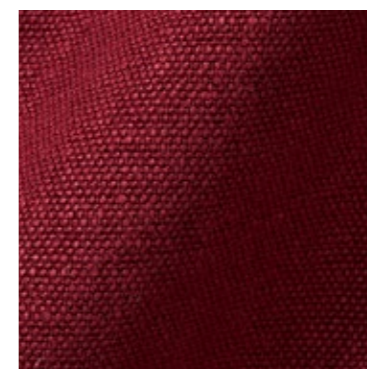
19588-214



19588-234



19588-325



19588-336

FABRIC WIDTH

**140 cm**

MATERIAL

**100 % LI**

MARTINDALE

**28.000**

PROPERTIES

CARE INSTRUCTIONS

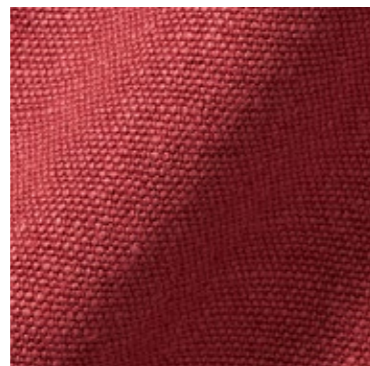


LINA is an ecological and durable 100 % washed linen fabric. Available in 40 colour shades, it can be beautifully upholstered on a sofa or draped as a curtain. Its exceptional softness and hand are the result of a hand-made dyeing and “basket tumbler” finish, and will continue to soften with time.

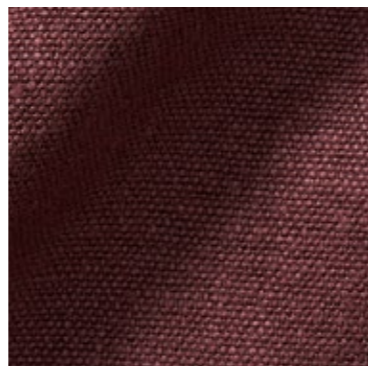
OVERVIEW



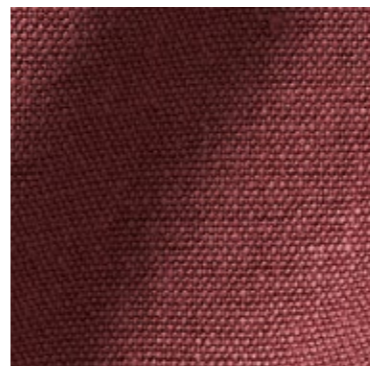
19588-344



19588-345



19588-387



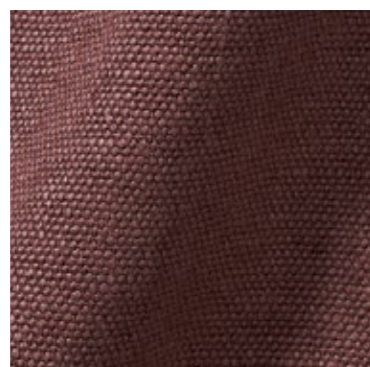
19588-445



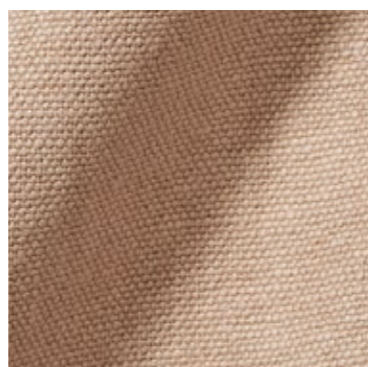
19588-446



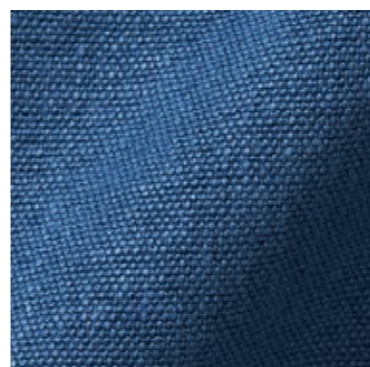
19588-454



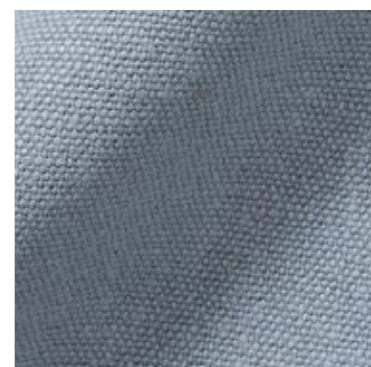
19588-457



19588-483



19588-556



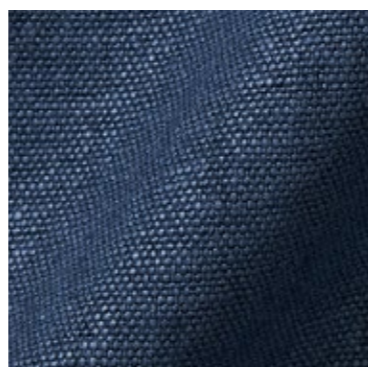
19588-564



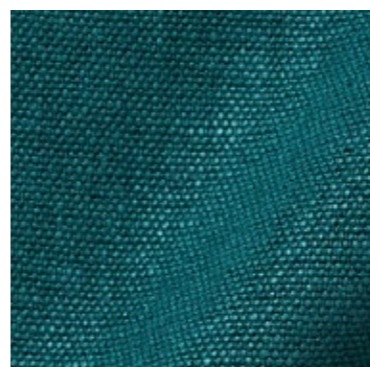
19588-565



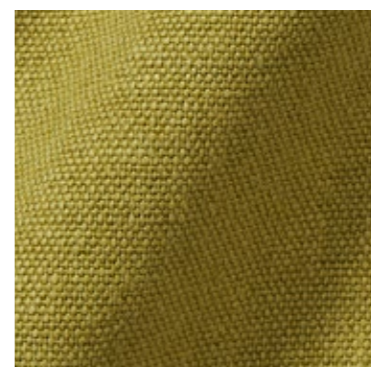
19588-595



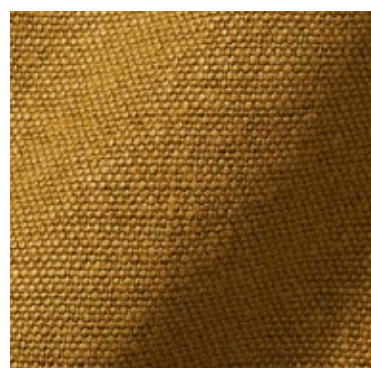
19588-597



19588-687



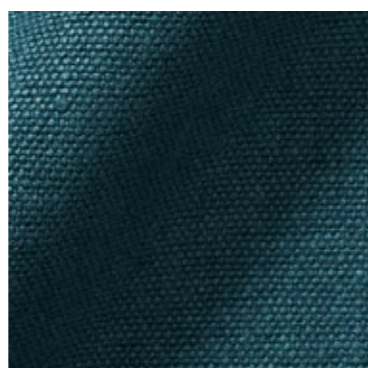
19588-714



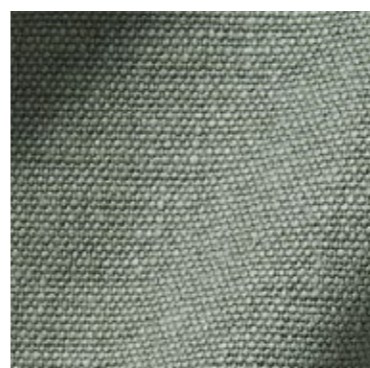
19588-724



19588-774



19588-777



19588-786



19588-793

# ETAMINE

PARIS

NAME <b>Lina</b>
ARTICLE NUMBER <b>19588</b>
CATEGORY <b>Decoration / Upholstery</b>

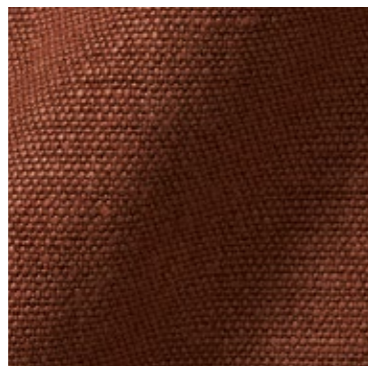
FABRIC WIDTH <b>140 cm</b>
MATERIAL <b>100 % LI</b>
MARTINDALE <b>28.000</b>

PROPERTIES
CARE INSTRUCTIONS 

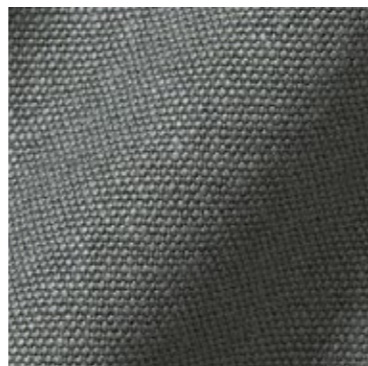
OVERVIEW



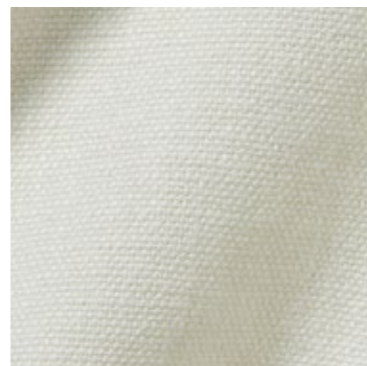
19588-827



19588-832



19588-877



19588-880



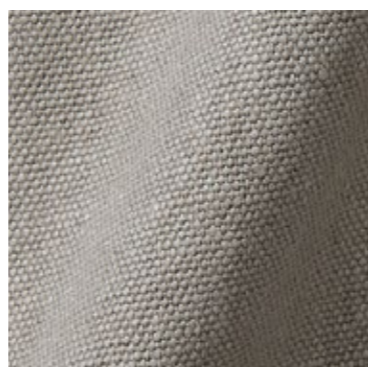
19588-881



19588-882



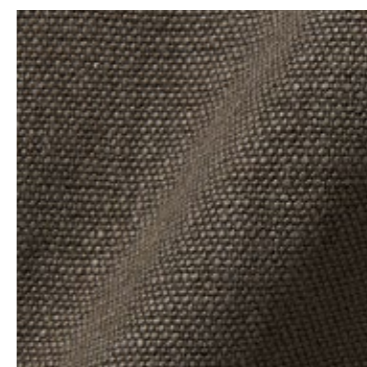
19588-883



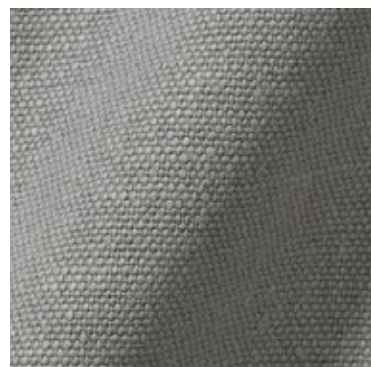
19588-884



19588-885



19588-886



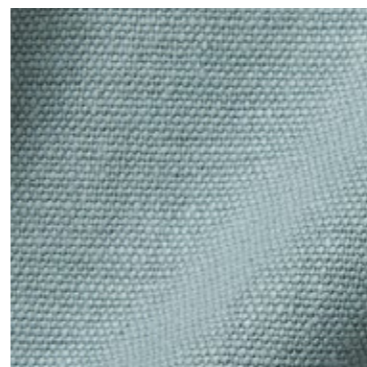
19588-893



19588-990



19588-992



19588-993



19588-994



19588-998

**ETAMINE**  
PARIS

NAME <b>Lina</b>
ARTICLE NUMBER <b>19588</b>
CATEGORY <b>Decoration / Upholstery</b>

FABRIC WIDTH <b>140 cm</b>
MATERIAL <b>100 % LI</b>
MARTINDALE <b>28.000</b>

PROPERTIES
CARE INSTRUCTIONS 

# Order

COMPANY NAME

---

CUSTOMER NR

---

SHIP TO:

STREET

---

CITY / STATE / ZIP

---

ANY SPECIAL REQUEST

To submit your request: Please click the **SAVE & SEND** button, the PDF will be automatically attached to your email to us.

OVERVIEW

**ETAMINE**  
PARIS



IMPRINT

**Zimmer + Rohde GmbH**  
Zimmersmühlenweg 14-18  
61440 Oberursel/Frankfurt  
Germany

www.zimmer-rohde.com  
info@zimmer-rohde.com  
Phone +49 (0) 6171 632 02

**CEO**  
Torsten Poschardt

HR Bad Homburg, HRB 5073  
Ust-IdNr. DE 812 646 222

SAVE & SEND