



# [ate'ljε]

AUTUMN/WINTER 2021

ZR

ZIMMER+ROHDE

 **CLICKBOOK**

# OVERVIEW

INFINITY PLUS	04
ATELIER	07
OPENING	08
VENUE	09
SETUP	10
STAGE	11
STUDY	12
FAME	14
AERO NEW FR	16
VIVID RE FR	18
NOVEL RE FR	20
PENTHOUSE FR	22

**ZIMMER + ROHDE**



Rachel Anne Duffy

# [atɛ'ljɛ]

**ZIMMER + ROHDE**

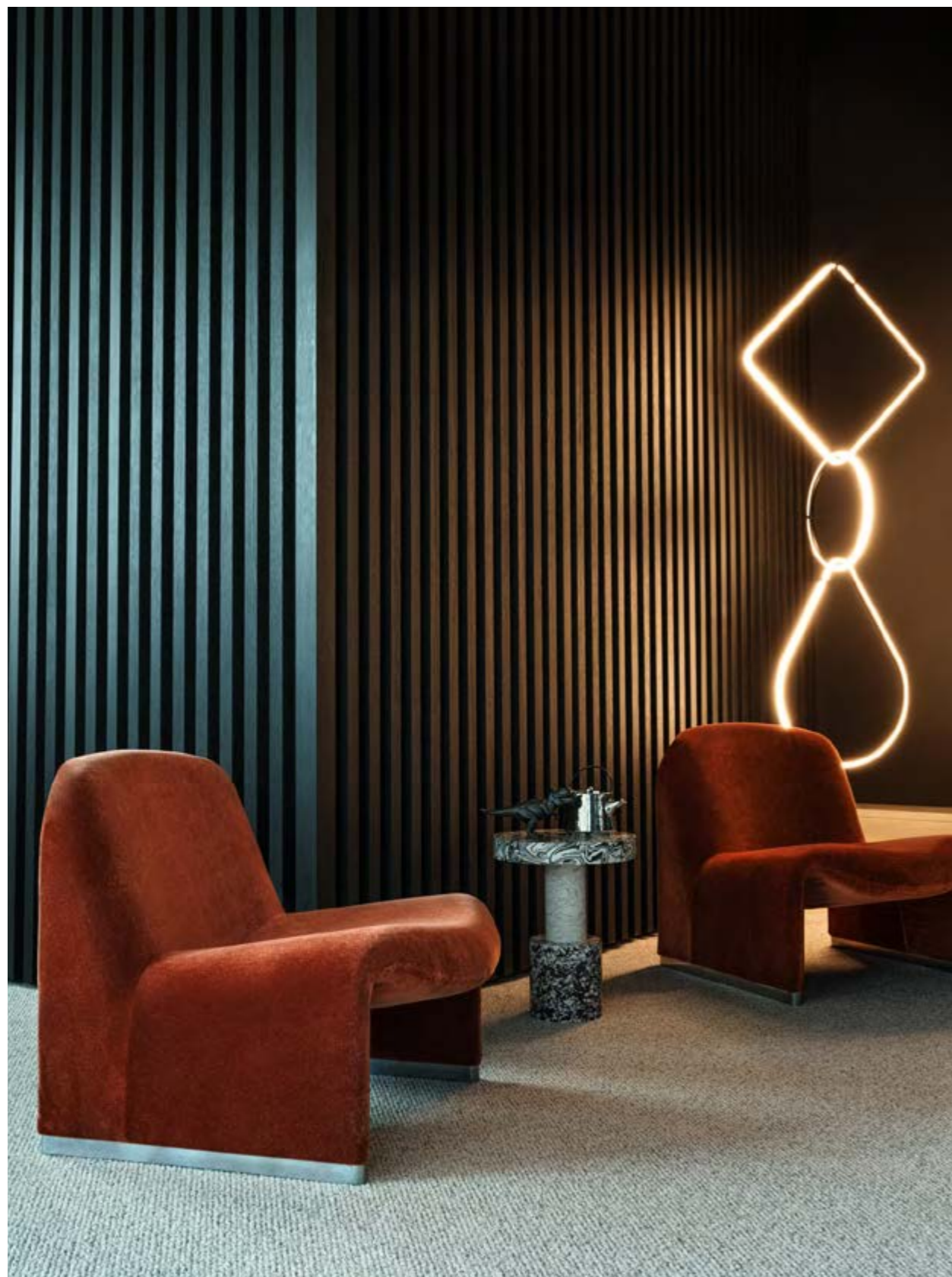
The atelier or artist's studio can be considered a reflection of the artist and their work. Whether a sumptuous palazzo or a modest retreat, vibrant art workshop or dreamy garden: often the parallels of the artistic environment can be clearly seen in the works of art. This is where the impressions, ideas and inspirations collected from the world outside are translated in the inimitable style of the artist in their chosen medium. Light also plays a decisive role. Mediterranean vibes, with their clear and vibrant colors, are just as palpable as the softer, darker or sometimes bleak atmosphere of the north.

But the romantic notion of an artistic place of creation does not always reflect reality. Andy Warhol for example had his entire Factory completely lined with silver foil – including the windows – and produced endless streams of art.

The atelier is often not only the place of creation but also key to the self-image of the artist. It can often serve as a space in which societal rules and social hierarchies are suspended. This is where an illustrious circle of artists, actors and personalities from all walks of life come together – known in Warhol's world as "superstars".

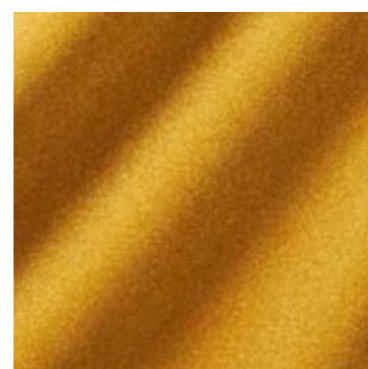
Zimmer + Rohde's ATELIER collection is dedicated to glasswork in particular, which plays a major role in the world of art as well as in architecture. The ancient technique of glass making and its fragile results serve as an interesting contrast. Playful and sensual objects for interiors can be developed using these traditional methods. Innovative, artistic windows and facades, like those created by Gerhard Richter for Cologne Cathedral or the visionary glass façades of urban buildings like Harpa Concert Hall, designed by the artist Ólafur Elíasson.

With the use of exclusive materials, exciting manufacturing methods and design that references glasswork in a variety of ways, the ATELIER collection explores the many facets and celebrates this special art form.

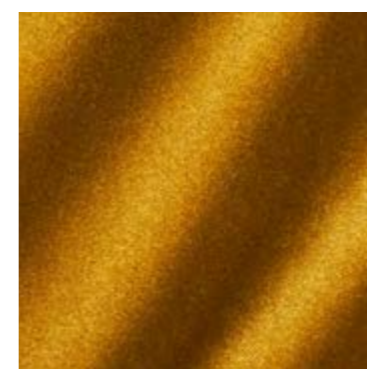


# INFINITY PLUS

**ZIMMER + ROHDE**



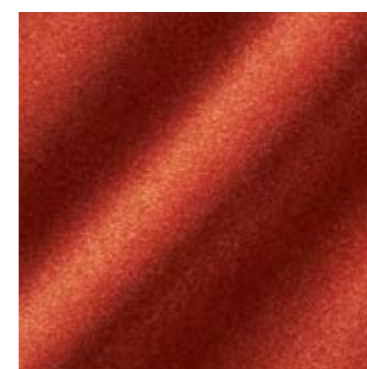
10660-184



10660-194



10660-224



10660-235

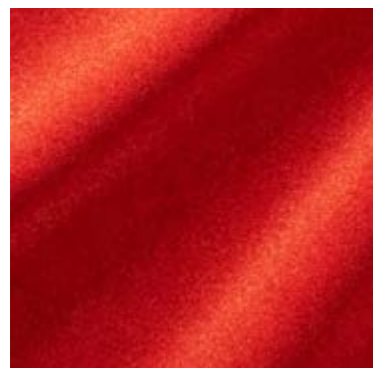
NAME <b>Infinity Plus</b>
ARTICLE NUMBER <b>10660</b>
CATEGORY <b>Upholstery</b>

FABRIC WIDTH <b>140 cm</b>
MATERIAL <b>Ground: 100 % PES Pile: 100 % PAN</b>
MARTINDALE <b>100.000</b>

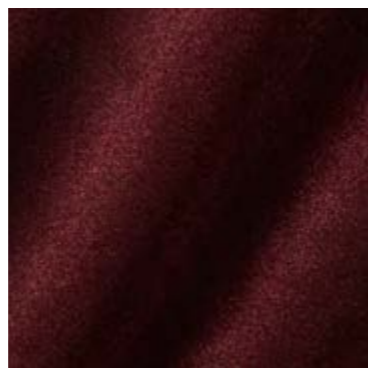
PROPERTIES 
CARE INSTRUCTIONS 

With INFINITY PLUS VOL II, we are building on the success of this exceptional upholstery fabric with 40 new colors. Characterized by its easy-care quality, washability, superior light and color fastness as well as high abrasion resistance, INFINITY PLUS combines the highest quality with high-tech functionality. In keeping with the contemporary Zeitgeist, we now present a total of 80 colors that leave nothing to be desired.

OVERVIEW



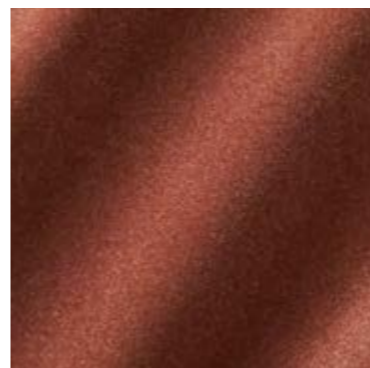
10660-324



10660-349



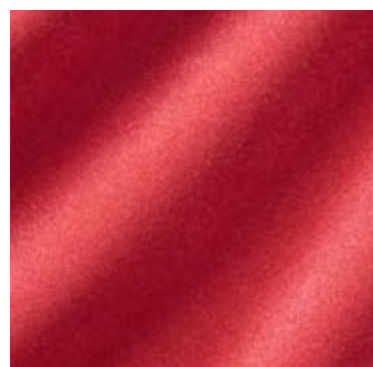
10660-385



10660-434



10660-436



10660-444



10660-445



10660-449



10660-483



10660-494



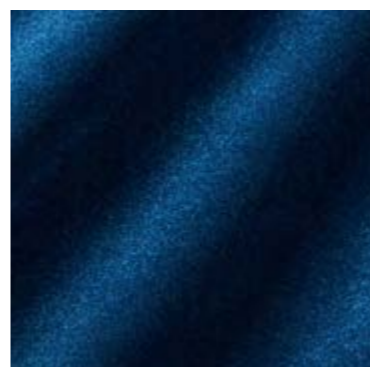
10660-554



10660-555



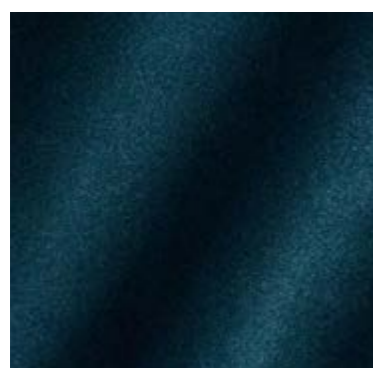
10660-557



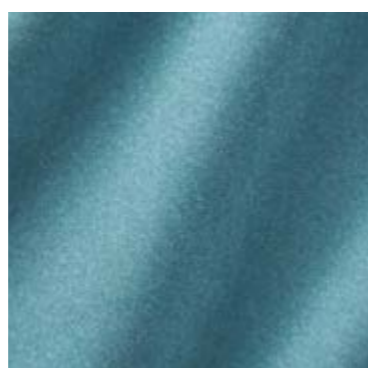
10660-568



10660-593



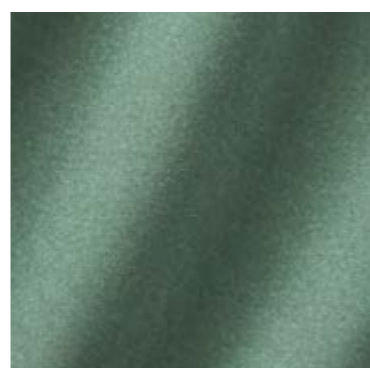
10660-657



10660-663



10660-665



10660-673

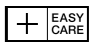



10660-675

**ZIMMER + ROHDE**

NAME <b>Infinity Plus</b>
ARTICLE NUMBER <b>10660</b>
CATEGORY <b>Upholstery</b>

FABRIC WIDTH <b>140 cm</b>
MATERIAL <b>Ground: 100 % PES</b> <b>Pile: 100 % PAN</b>
MARTINDALE <b>100.000</b>

PROPERTIES 
CARE INSTRUCTIONS 

OVERVIEW



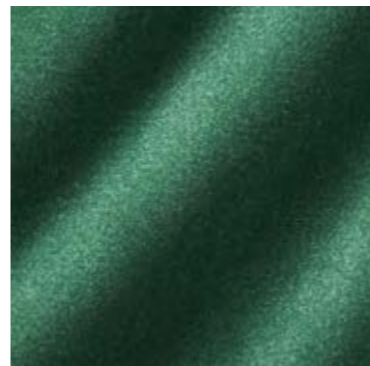
10660-677



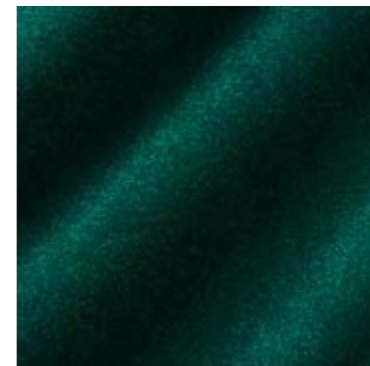
10660-678



10660-693



10660-775



10660-778



10660-785



10660-813



10660-814



10660-815



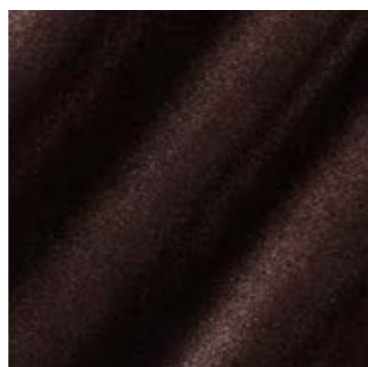
10660-882



10660-884



10660-886



10660-889



10660-893



10660-959

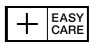







10660-993

**ZIMMER + ROHDE**

NAME <b>Infinity Plus</b>
ARTICLE NUMBER <b>10660</b>
CATEGORY <b>Upholstery</b>

FABRIC WIDTH <b>140 cm</b>
MATERIAL <b>Ground: 100 % PES Pile: 100 % PAN</b>
MARTINDALE <b>100.000</b>

PROPERTIES 
CARE INSTRUCTIONS     



# ATELIER



10901-568



10901-888



10901-894

## ZIMMER + ROHDE

NAME  
**Atelier**

ARTICLE NUMBER  
**10901**

CATEGORY  
**Decoration**

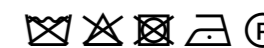
FABRIC WIDTH  
**140 cm**

MATERIAL  
**74 % CO, 13 % PAN,  
10 % PES, 3 % PA**

MARTINDALE

PROPERTIES  
**Recommend puddle  
on the floor**

CARE INSTRUCTIONS



ATELIER embodies textile art of the highest caliber. Inspired by the tradition of woven carpets, this modern work of art was created as an exceptional decorative fabric. The geometric design is the result of multiple weaves and overlays of different yarns. The repeat extends across the entire width of the fabric and is finished off by a voluminous fringed edge on both sides.



# OPENING



10902-358



10902-464



10902-686



10902-892

OVERVIEW

**ZIMMER + ROHDE**

NAME <b>Opening</b>
ARTICLE NUMBER <b>10902</b>
CATEGORY <b>Decoration</b>

FABRIC WIDTH <b>140 cm</b> <b>Usable Width: 135 cm</b>
MATERIAL <b>62 % CO, 38 % LI</b>
MARTINDALE

PROPERTIES
CARE INSTRUCTIONS 

The colored areas of OPENING appear like a lively mosaic in finely coordinated shades. Textured and colored papers were used as a template for this digital print and arranged to form a dynamic surface. Printed on a casual linen and cotton base cloth, this decorative fabric has a charming drape.





# VENUE

OVERVIEW

**ZIMMER + ROHDE**



10903-886



10903-898



10903-991



10903-993

NAME <b>Venue</b>
ARTICLE NUMBER <b>10903</b>
CATEGORY <b>Decoration</b>

FABRIC WIDTH <b>300 cm</b>
MATERIAL <b>60 % PES, 15 % LI, 12 % CLY, 9 % CO, 3 % CV</b>
MARTINDALE

PROPERTIES 
CARE INSTRUCTIONS      

Round, shifting shapes form the design of VENUE on an elegant sheer base. A new technique makes this burnout possible with specially developed textured effect yarns. The soft patina on the surface is also present in the sheer background which creates an exciting interplay at the window.



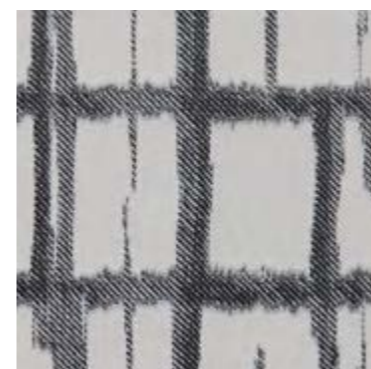
# SETUP



10904-882



10904-894



10904-988

OVERVIEW

**ZIMMER + ROHDE**

NAME  
**Setup**

ARTICLE NUMBER  
**10904**

CATEGORY  
**Sheers**

FABRIC WIDTH  
**298 cm** ↑↓

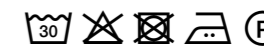
MATERIAL  
**40 % PES, 34 % LI,  
14 % CV, 12 % CO**

MARTINDALE

PROPERTIES



CARE INSTRUCTIONS



SETUP is a modern, wide-width panel in three natural colorways that play with different contrasts.

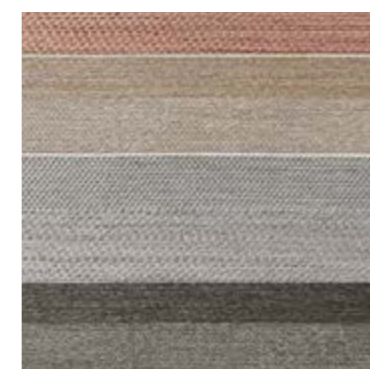
The base in the lower half of this decorative fabric shows a hand-drawn, grid-like geometry that disappears excitingly towards the top. Created using the Scherli technique, the design appears with the help of a hand-drawn jacquard structure alternating with the plain, dry background, which continues upwards as a surface.



# STAGE



10905-196



10905-486



10905-898



10905-981

## ZIMMER + ROHDE

NAME <b>Stage</b>
ARTICLE NUMBER <b>10905</b>
CATEGORY <b>Sheers</b>

FABRIC WIDTH <b>300 cm</b>
MATERIAL <b>51 % PAN, 49 % PES</b>
MARTINDALE

PROPERTIES 
CARE INSTRUCTIONS 

Horizontal block stripes form the basis for this elegant, semi-sheer drapery fabric. The combination of different weave structures establishes an exciting interplay of dense and more transparent surfaces. Finely coordinated color combinations create a gentle gradient in each of the four colorways in order to emphasize the design.



# STUDY



10906-595



10906-883



10906-891



10906-898

## ZIMMER + ROHDE

NAME <b>Study</b>
ARTICLE NUMBER <b>10906</b>
CATEGORY <b>Decoration</b>

FABRIC WIDTH <b>320 cm</b>
MATERIAL <b>65 % LI, 17 % CO, 12 % PA, 5 % PES, 1 % MTF</b>
MARTINDALE

PROPERTIES 
CARE INSTRUCTIONS      

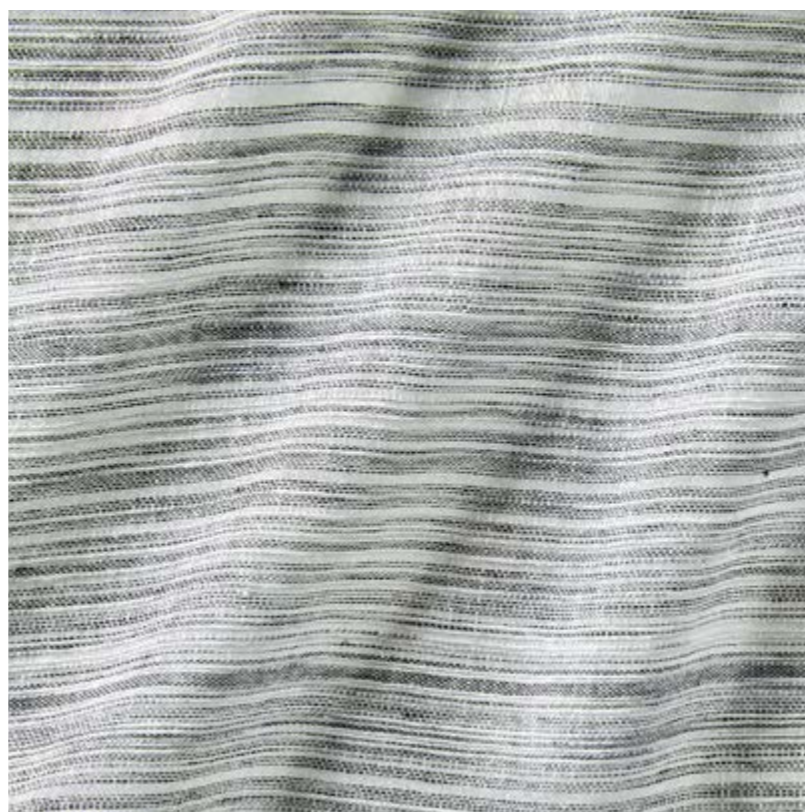
The playful appearance of STUDY looks like fine layers of rock. A unique yarn effect runs randomly through the casual linen base. Subtle shiny accents are integrated into the yarn, which provide an exciting contrast to the natural materials. Softly flowing drapery that is offered in 6 subtle neutral colorways.

OVERVIEW

**ZIMMER + ROHDE**






10906-990



10906-993

NAME <b>Study</b>
ARTICLE NUMBER <b>10906</b>
CATEGORY <b>Decoration</b>

FABRIC WIDTH <b>320 cm</b>
MATERIAL <b>65 % LI, 17 % CO, 12 % PA, 5 % PES, 1 % MTF</b>
MARTINDALE

PROPERTIES 
CARE INSTRUCTIONS     



# FAME



10907-794



10907-883



10907-886









10907-900

## ZIMMER + ROHDE

NAME <b>Fame</b>
ARTICLE NUMBER <b>10907</b>
CATEGORY <b>Sheers</b>

FABRIC WIDTH <b>320 cm</b> ↑↓
MATERIAL <b>76 % HA, 24 % CO</b>
MARTINDALE

PROPERTIES <b>Recommend puddle on the floor</b> 
CARE INSTRUCTIONS     

With its high hemp content, the FAME article introduces this sustainable material into a Zimmer + Rohde collection for the first time ever. Hemp, which is just as traditional as linen and has been known for centuries, is produced in a much more ecological way; the plant itself requires very little water and is hardly susceptible to pests.



FAME allures with its exceptionally soft, voluminous feel and is the epitome of natural luxury.

OVERVIEW

**ZIMMER + RHODE**

NAME <b>Fame</b>
ARTICLE NUMBER <b>10907</b>
CATEGORY <b>Sheers</b>

FABRIC WIDTH <b>320 cm</b> ↑↓
MATERIAL <b>76 % HA, 24 % CO</b>
MARTINDALE

PROPERTIES <b>Recommend puddle on the floor</b> 
CARE INSTRUCTIONS 



10907-981



10907-992



# AERO NEW FR



10908-184



10908-336



10908-444



10908-446

## ZIMMER + ROHDE

NAME <b>Aero New FR</b>
ARTICLE NUMBER <b>10908</b>
CATEGORY <b>Sheers</b>

FABRIC WIDTH <b>330 cm</b> ↑↓
MATERIAL <b>77 % PES CS, 23 % PES</b>
MARTINDALE

PROPERTIES 
CARE INSTRUCTIONS 

AERO NEW FR follows our successful best-seller AERO. A superfine lino warp combined with the thinnest weft threads in Trevira CS makes this highly transparent, feather-light quality possible. A subtle strié gives the 20 colorways of AERO NEW FR a soft elegant shimmer. Like its predecessor, AERO NEW FR captivates with its light drape and offers both the obligatory natural shades and exciting color nuances.



OVERVIEW



10908-557



10908-566



10908-665



10908-882



10908-883



10908-884



10908-885



10908-886



10908-887



10908-891



10908-980



10908-988



10908-990



10908-994



10908-996



10908-999





10908-184

**ZIMMER + ROHDE**

NAME <b>Aero New FR</b>
ARTICLE NUMBER <b>10908</b>
CATEGORY <b>Sheers</b>

FABRIC WIDTH <b>330 cm</b> ↑↓
MATERIAL <b>77 % PES CS, 23 % PES</b>
MARTINDALE

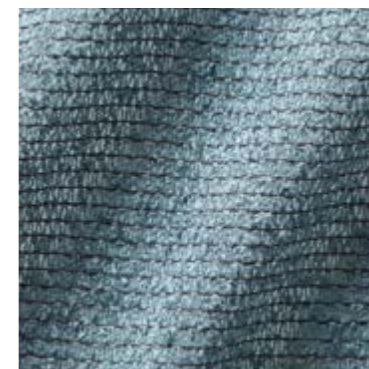
PROPERTIES  
CARE INSTRUCTIONS     



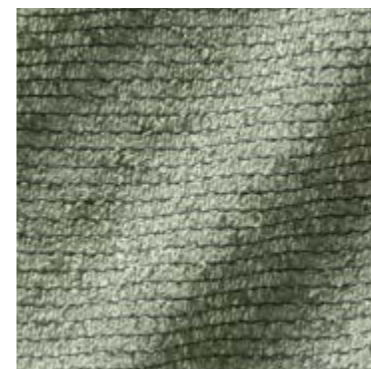
# VIVID RE FR



10909-445



10909-656



10909-776



10909-883

## OVERVIEW

### ZIMMER + ROHDE

NAME <b>Vivid RE FR</b>
ARTICLE NUMBER <b>10909</b>
CATEGORY <b>Sheers</b>

FABRIC WIDTH <b>300 cm</b> ↑↓
MATERIAL <b>80 % PES FR, 20 % PES CS</b>
MARTINDALE

PROPERTIES 
CARE INSTRUCTIONS 

A bouclé yarn specially developed for Zimmer + Rohde creates the character of the sustainable article VIVID RE FR. 60 % polyester from recycled PET bottles is used in the weft, the origin of which is no longer noticeable in the soft yarn. Woven on a lino warp, the bouclé can blossom softly in 12 standard colors. Its additional suitability for the Contract market allows for a wide and varied range of applications.

OVERVIEW

**ZIMMER + ROHDE**



10909-884



10909-886



10909-888



10909-892



10909-900



10909-987



10909-991



10909-999

NAME <b>Vivid RE FR</b>
ARTICLE NUMBER <b>10909</b>
CATEGORY <b>Sheers</b>

FABRIC WIDTH <b>300 cm</b> ↑↓
MATERIAL <b>80 % PES FR, 20 % PES CS</b>
MARTINDALE

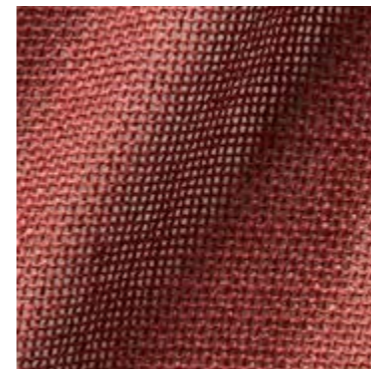
PROPERTIES 
CARE INSTRUCTIONS 



# NOVEL RE FR

OVERVIEW

**ZIMMER + ROHDE**



10910-338



10910-444



10910-559



10910-565

NAME <b>Novel RE FR</b>
ARTICLE NUMBER <b>10910</b>
CATEGORY <b>Decoration</b>

FABRIC WIDTH <b>300 cm</b> ↑↓
MATERIAL <b>100 % PES FR</b>
MARTINDALE

PROPERTIES 
CARE INSTRUCTIONS 

NOVEL RE FR radiates a natural subtlety and at the same time surprises with its thoroughly technical composition. A high-quality yarn in warp and weft consisting of 50 % recycled polyester was developed for a special dyeing process. In this process, two components are charged in opposite directions and thus attract the dyes to the yarn differently. The result is the beautiful mélangé in the 15 colorways of the NOVEL RE FR open weave.

**ZIMMER + ROHDE**



10910-675



10910-786



10910-883



10910-884



10910-887



10910-891



10910-892



10910-900



10910-993



10910-997



10910-999

NAME <b>Novel RE FR</b>
ARTICLE NUMBER <b>10910</b>
CATEGORY <b>Decoration</b>

FABRIC WIDTH <b>300 cm</b> ↑↓
MATERIAL <b>100 % PES FR</b>
MARTINDALE

PROPERTIES 
CARE INSTRUCTIONS 



# PENTHOUSE FR

**ZIMMER + ROHDE**



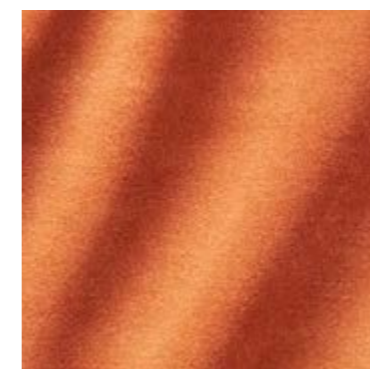
10911-113



10911-114



10911-235



10911-326

NAME <b>Penthouse FR</b>
ARTICLE NUMBER <b>10911</b>
CATEGORY <b>Decoration Upholstery</b>

FABRIC WIDTH <b>300 cm</b> ↑↓
MATERIAL <b>100 % PES FR</b>
MARTINDALE <b>50.000</b>

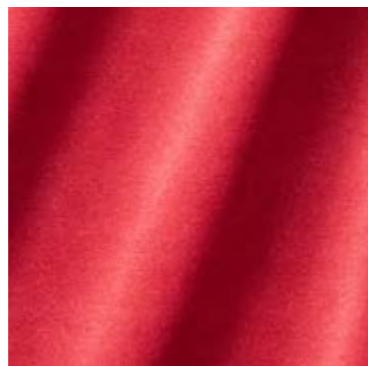
PROPERTIES 
CARE INSTRUCTIONS 

With its matte softness, the gently flowing decorative PENTHOUSE FR velour reflects the spirit of the times like no other material. PENTHOUSE FR not only stands for elegance, but also combines important practical aspects such as washability, wide-width and suitability for the commercial sector. The knitted velour is highly abrasion resistant due to its short, very dense pile and can be used for upholstery due to its superior properties. Available in 40 different shades, there's something for everyone here.

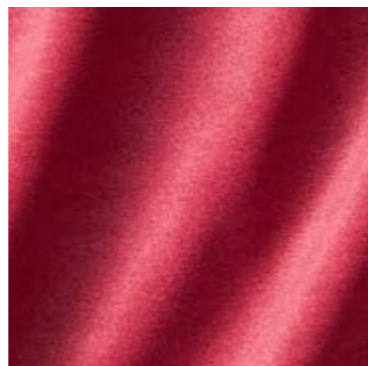
OVERVIEW



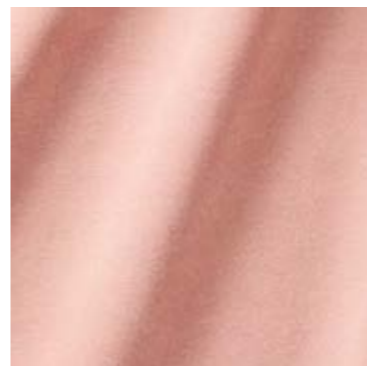
10911-336



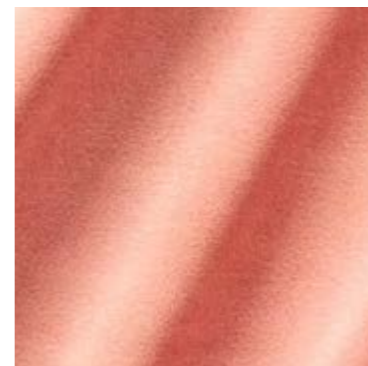
10911-337



10911-347



10911-434



10911-435



10911-436



10911-443



10911-445



10911-446



10911-454



10911-558



10911-567



10911-569



10911-654



10911-656



10911-677



10911-713



10911-776



10911-777



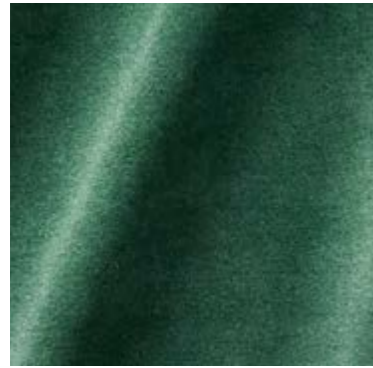
10911-778

**ZIMMER + ROHDE**

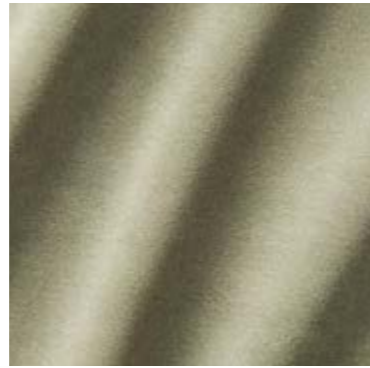
NAME <b>Penthouse FR</b>
ARTICLE NUMBER <b>10911</b>
CATEGORY <b>Decoration Upholstery</b>

FABRIC WIDTH <b>300 cm</b> ↑↓
MATERIAL <b>100 % PES FR</b>
MARTINDALE <b>50.000</b>

PROPERTIES 
CARE INSTRUCTIONS 



10911-779



10911-877



10911-882



10911-883



10911-884



10911-885



10911-887



10911-888



10911-891



10911-892



10911-900



10911-959



10911-983



10911-988



10911-994



10911-998

OVERVIEW

**ZIMMER + ROHDE**

NAME <b>Penthouse FR</b>
ARTICLE NUMBER <b>10911</b>
CATEGORY <b>Decoration Upholstery</b>

FABRIC WIDTH <b>300 cm</b> ↑↓
MATERIAL <b>100 % PES FR</b>
MARTINDALE <b>50.000</b>

PROPERTIES 
CARE INSTRUCTIONS 



# ORDER

COMPANY NAME

---

CUSTOMER NR

---

SHIP TO:

STREET

---

CITY / STATE / ZIP

---

ANY SPECIAL REQUEST

To submit your request: Please click the **SAVE & SEND** button, the PDF will be automatically attached to your email to us.

OVERVIEW

**ZIMMER + ROHDE**

IMPRINT

**Zimmer + Rohde GmbH**  
Zimmersmühlenweg 14-18  
61440 Oberursel/Frankfurt  
Germany

[www.zimmer-rohde.com](http://www.zimmer-rohde.com)  
[info@zimmer-rohde.com](mailto:info@zimmer-rohde.com)  
Phone +49 (0) 6171 632 02

**CEO**  
Torsten Poschardt

HR Bad Homburg, HRB 5073  
Ust-IdNr. DE 812 646 222

**SAVE & SEND**